

Datasheet

Excel Life™ Smart

Clip-in Wireless Dimmer

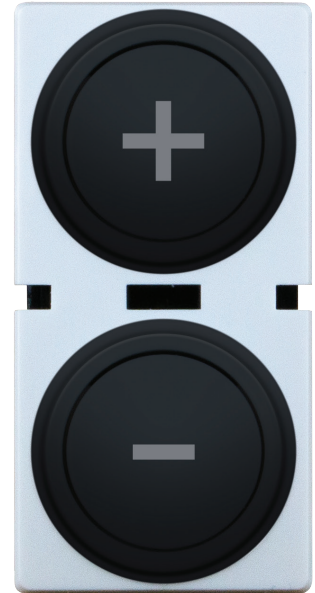
CAT. NO. EWNWCDWE, EWNWCDMW, EWNWCDMB



EWNWCDWE



EWNWCDMW



EWNWCDMB

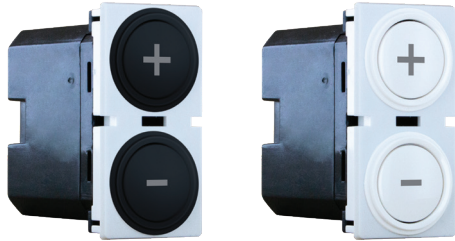
Cat. No.	EWNWCDWE	EWNWCDMW	EWNWCDMB
Colour	White (WE)	Matt White (MW)	Matt Black (MB)
Description	Clip-in Wireless Dimmer		
Battery	CR2032 3 V d.c.		
Wired/Wireless	Wireless		
Wireless Connectivity	Zigbee 2.4 Ghz to 2.4835 Ghz		
Mounting	Clip in Excel Life™ Smart grids:EWN1GPL, EWN2GPL EWN3GPL, EWN4GPL, EWN5GPL and EWN6GPL series		
Product Dimension (W X H X D)	120 x 76 x 10 mm		
Compliance	AS/NZS 60669.2.1, AS/NZS 4268, ETSI EN 300 328		

Datasheet

Excel Life™ Smart

Clip-in Wireless Dimmer

CAT. NO. **EWNWCDWE, EWNWCDMW, EWNWCDMB**



Single product	
Cat. No.	Barcode
EWNWCDWE	9321001525523
EWNWCDMW	9321001525530
EWNWCDMB	9321001525547

Outer box (QTY 120)	
Cat. No.	Barcode
EWNWCDWE	9321001525554
EWNWCDMW	9321001525561
EWNWCDMB	9321001525578

FEATURES

- Wireless Dimmers to expand an Excel life™ Smart installation (requires prior installation of Starter kit EWNSKIT series or Gateway Cat. No. 412181).
- Enable multi-way switching and remote control of Excel life™ Smart Dimmer micromodules.
- Can control up to 20 Excel life™ Smart wired products.
- Clip into Excel Life™ Smart grids (refer compatibility on front page) for a perfect integration alongside other Excel Life™ Smart and Excel Life™ mechanisms.

Legrand Australia
1300 369 777
www.legrand.com.au
ABN 31 000 102 661

Legrand New Zealand
0800 476 009
www.legrand.co.nz

Refer to your group buying office, Legrand Sales Representative or Legrand Sales Office for pricing.

Please note: specifications are subject to change without prior notice.



LE14699AA

10 / 2023